

---

Our fleet of advanced unmanned aircraft systems are equipped with 3-axis fully stabilised gimbals carrying professional digital cameras and sensors. Our XT2 radiometric thermal sensor can provide high resolution blended thermal imaging to visualise damage and heat loss.

Our RGB aerial cameras provide 20MP photos and 4K video, with our Matrice 210 V2 system offering a range of payloads including the 180x Zenmuse Z30 zoom.

Rigorous risk management, maintenance and safety controls are in place to ensure all our operations are carried out efficiently and safely.



---

## ABOUT US



Shetland Flyer Aerial Media are UK CAA approved commercial UAS operators with an Operational Authorisation for congested areas. We hold £10M public liability insurance and our experienced pilots are professional photographers, videographers and surveyors who hold international SUAS pilot certification.



SHETLAND FLYER AERIAL MEDIA

11 Ronald Street | Lerwick | Shetland | ZE1 0BQ  
01595 747047 | 07788 990550  
[www.shetland-flyer.media](http://www.shetland-flyer.media)  
[info@shetland-flyer.co.uk](mailto:info@shetland-flyer.co.uk)

---

## SHETLAND FLYER AERIAL MEDIA

---



**Aerial Inspection  
and Survey Services:  
Buildings, Roofs,  
Land & Marine  
Infrastructure**

# INSPECTION AND SURVEY SERVICES

We offer a range of specialist services for aerial inspection and survey of buildings, roofs, land, marine assets and critical infrastructure. Services include mapping and 3D modelling, detailed roof and building surveys, construction site monitoring, and asset inspection including thermal imaging for a range of industrial applications. We supply detailed reports of all our survey and inspection tasks.



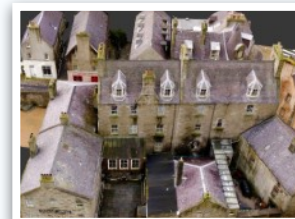
*Advanced unmanned aircraft technology with high quality sensors operated by experienced pilots*

Shetland Flyer Aerial Media offer a wide range of media, survey and inspection services for buildings, roofs, land and marine assets using our fleet of advanced unmanned aircraft systems (UAS) and elevated pole cameras. Our specialist survey drone uses RTK or PPK positioning providing centimetre level accuracy even over extensive sites. All survey and inspection products are processed in-house using purpose built workstations, so your data is always safe and secure.

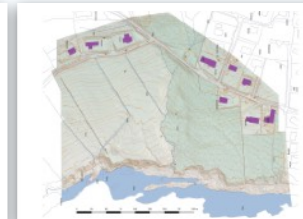
4K video, 20MP+ photos and thermal imaging are ideal for survey and inspection of your assets with minimal downtime. Drone survey and inspections are not only faster than traditional methods but also much safer, avoiding the cost of scaffolding and risk of your personnel working at heights.

## MAPPING AND 3D MODELLING

We provide highly accurate orthomosaic maps and 3D models using our specialised RTK / PPK SUA, ideal for planning applications, building and roof inspections, insurance claims for storm and fire damage, construction and environmental monitoring. Georeferenced orthos, DTMs and 3D models can be imported into CAD and GIS applications for further analysis and processing.



*Accurate 3D models of entire buildings and sites*



*Full digitised linework and drafting service*

## ROOF AND INFRASTRUCTURE SURVEYS

Using high resolution aerial video and photographs we can provide detailed surveys of roofs, masts, chimney stacks and other high infrastructure avoiding the expense of scaffolding and risks of personnel working at heights. A full report of methodology and conditions is provided with all our survey data, and each image is referenced to an overview image to easily locate specific problem areas.



*High resolution surveys of live infrastructure*



*Difficult to access roof surveys even in congested areas*

## INSPECTION AND THERMAL IMAGING

Our DJI Matrice 210 V2 is the perfect tool for asset inspection and high resolution radiometric thermal imaging. The Zenmuse Z30 is the most powerful aerial zoom on the market at 180x, and our 13mm FLIR / DJI XT2 640 x 512 30Hz thermal sensor provides accurate thermal data for a wide range of applications. We also operate the tiny Anafi Thermal which provides radiometric thermal data even in heavily congested areas.



*The Matrice 210 V2 carries our FLIR XT2 sensor, and the Z30 offers 180x zoom for asset inspections at a safe distance*

